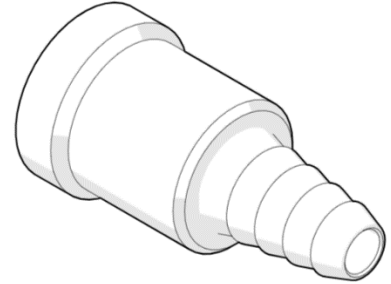


Product Installation Guidelines

Version 1, 24 February 2025, Page 1 of 2

GalvinLab® CP-BS Lead Safe™ #16XT Tube Nozzle with Integral Dual Check Valve



PRODUCT CODES

- 167.95.00.00

SPECIFICATIONS

- High quality chrome finish for easy cleaning.
- Lead Safe™ brass construction*

IMPORTANT: All taps are tested in accordance with AS 3718 and leave our premises in good working order.

*Our Lead Safe™ product range is compliant with the Lead-Free Requirements of the NCC 2022 Vol. Three, Clause A5G4(2) and NSF/ANSI 372.

**Any flow controller incorporated in the outlet to be tightened to prevent removal by hand. As Per AS3718.

WARNINGS: Special attentions to be paid on notes, photos, images, or drawings of assembly steps marked with the warning symbol.



TECHNICAL DATA

Inlet		M22 x 1p
Working Pressure Range (kPa)	Min	50
	Max	500
Working Temperature Range (°C)	Min	5
	Max	65
Finish		Chrome

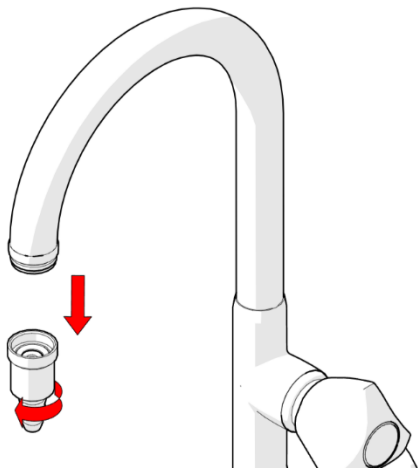
NOTE: Galvin Engineering continually strives to improve their products. Specifications may change without notice.

TOOLS REQUIRED

- Spanner or adjustable crescent

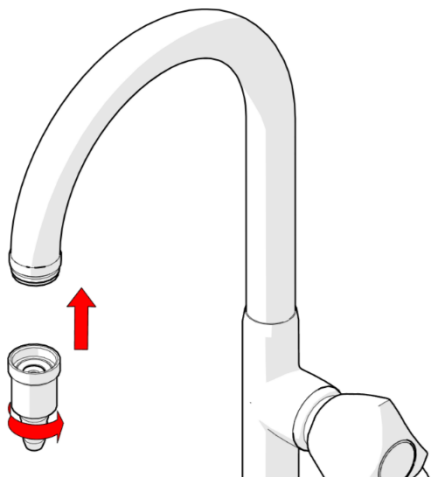
INSTALLATION

INSTALLATION COMPLIANCE: Galvin Engineering products must be installed in accordance with these installation instructions and in accordance with AS/NZS 3500, the PCA and your local regulatory requirements. Water and/or electrical supply conditions must also comply to the applicable national and/or state standards. Failing to comply with these provisions shall void the product warranty and may affect the performance of the product.



1. Remove Aerator Housing

- Turn nozzle in an anti-clockwise direction to loosen and to remove as shown.



2. Reassemble

- Reverse step 1 using the new nozzle ensuring correct orientation.
- Test for leaks and correct operation

TROUBLESHOOTING

PROBLEM	CAUSE	RECTIFICATION
No water flow	Obstruction on spout	Check if there are obstructions hindering the water flow in the spout and take it out.

WARRANTY

Galvin Engineering products are covered under our Manufacturer's Warranty. Galvin Engineering products must be installed in accordance with the installation instructions and in accordance with AS 3500 and NCC Volume Three, relevant Australian Standards and local authorities applicable to product being installed. Water and electrical supply conditions must also comply to the applicable national and/or state standards, failing to comply with these provisions may void the product warranty and affect performance of the product.

Please visit www.galvinengineering.com.au to view the full warranty, our Installation Compliance and Maintenance & Cleaning information as well as any other additional information.

Within Australia: 1300 514 074 Outside Australia: P: +61 (0)8 9338 2344

F: +61 (0)8 9338 2340

sales@galvinengineering.com.au

www.galvinengineering.com.au

ABN: 78 008 719 382

PERTH | SYDNEY | MELBOURNE | BRISBANE | ADELAIDE

